



**At St. Peter's
Hospital**

**Special points of
interest:**

- Highlight on SAGE Awards
- RGPc Update
- Education Calendar for May
- Recommended Reading List

Please email this newsletter to all appropriate contacts & networks. If you would like to be added to our distribution list, please contact Jenifer Horvat:

jhorvat@stpetes.ca

Breaking News. . .Specialized Geriatric Services

Welcome to the RGPc Newsletter. Breaking News brings you current information related to Specialized Geriatric Services (SGS) while offering our Regions a venue for sharing news, events and initiatives with others. If you have news to share please email jhorvat@stpetes.ca

Issue 17

May Newsletter 2006

Highlight on SAGE Awards

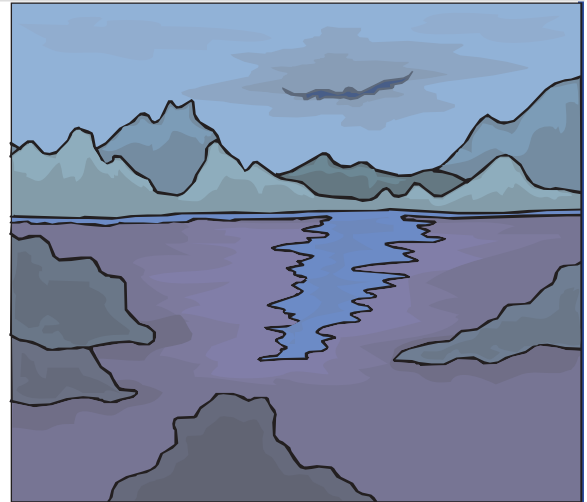
3rd Annual RGPc/St.Peter's Service Awards for Geriatric Excel- lence (SAGE)

Now in it's third year, this unique awards program continues to be a huge success. The RGPc/St.Peter's SAGE awards celebrate the accomplishments of outstanding individuals who are dedicated to improving the lives of seniors. This year, 55 nominations were received from across our three LHINI areas.

All nominees will be recognized at an awards celebration to be held in their honor on May 26, 2006. The event will be held at the picturesque River Run Center in Guelph and will feature a reception, dinner, entertainment and the much anticipated presentation of awards to the winners in five different categories. If you have not already purchased your ticket for the evening, please call 905-777-3837 ext. 12434 to avoid disappointment! With 250+ confirmed to attend so far, tickets are selling very quickly.

Congratulations to the following Students, Individuals, Executives, Teams and Organizations who are this year's SAGE nominees:

Anna Arpino
Audrey Devitt-Wilson
Behavioural Health Program Team,
St. Peter's Hospital
Bob Austin



Briana Zur
Chris Stevens & Mary Maley, Case
Management Team St. Peter's Hos-
pital
Community Mental Health Clinic,
Wellington Dufferin
Council on Aging, Hamilton
Dale Marshall
Dave Shaw & Susan Eeuws, Phar-
macists St. Peter's Hospital
Debbie Mings
Debra Osborne & Ellen Ross
Diane Pye
Douglas H. Rapelje
Dr. Carolyn Rosenthal
Dr. Cheryl Allaby
Dr. David Lam
Dr. George Heckman
Dr. Irene Turpie
Dr. James Morreale

2006 SAGE Award Nominees, Continued...

Dr. Nisker – JBN Memory Clinic

Dr. P.A McGarry

Dymphna Clarke

Elder Abuse Response Team, Waterloo CCAC

Wellington Dufferin Geriatric Resource Training Program

Halton Oral Health Outreach Program

Hank Alberts

Heather Bell

Jack O'Neil

Jane McKinnon Wilson

Jennifer Haddy

Karen Allcroft

Kim Voelker

Krys Theriault

Laura Jewell

Lenora Noel & Dr. Willie Molloy Geriatric Outreach Program Team

Lisa Stokman

Long Term Care Advisor Team, Hamilton

Magda Lenartowicz

Marlene Hill

Niagara Geriatric Mental Health Outreach Program

Occupational Therapy Seating Clinic, St. Peters

Occupational Therapy Services Team, St. Peter's

Palliative Care Unit, St. Peter's Hospital

Rose Freeman

Seniors Offering Support – Wellington Dufferin

Shalom Village, Hamilton

Sharon Turner

St. Joseph's Health Centre, Guelph

Susan Rivers

Tim Standish

Wellington-Dufferin Seniors Mental Health Service

Wendy McPherson

Please watch for profiles of this year's award winners in June.

Update from Hamilton - Hospital Elder Life Program (HELP)

The Hospital Elder Life Program (HELP) at Hamilton Health Sciences has been up and running for over a year now. Our first patient was enrolled in March of 2005. Since that time we have enrolled over 200 patients and have recruited and retained over 40 volunteers who provide service 3 times a day, 7 days a week. We regularly have approximately 10 to 15 patients on service at a time. Early results from our first year include very low delirium and functional decline rates as well as very high patient and family satisfaction. Nurses have also reported lower numbers of call bell use.

We attended the annual HELP retreat held in Connecticut for all HELP dissemination sites and shared our first year experiences as well as gained valuable tips from other groups. The HELP program has also received numerous requests for presentations including our participation in the Ministry of Health Innovation Expo and the recent RGP post OGA conference.

HELP's second year promises to be as exciting as the first. There are plans underway to expand HELP to a second and possibly third ward at a different site within Hamilton Health Sciences. We continue to have numerous volunteer applicants and will continue to offer training for new volunteers three times a year. We hope to more than double the number of patients we enroll this year. We are implementing a new evidenced based therapeutic activities program created by a researcher out of the United States, Dr Cameron Camp for working with patients with more advanced dementia. Montessori Based Activities for patients with dementia is a unique way of creating and delivering activities for patients, which has been found to decrease fear and anxiety and increase active engagement.

We are greatly encouraged by the positive progress of HELP to date and look forward to strengthening and expanding this elder friendly model of care.

Thanks to Erin Cochrane & Anne Pizzacalla for this update. For more information, please contact Erin Cochrane, Elder Life Specialist at cochran@HHSC.CA

Update from the RGPc

RGPc welcomes Lynn Sage

Lynn Sage is covering for Jenifer Horvat who is on maternity leave. Lynn's background with the Ontario Seniors' Secretariat and the Minister Responsible for Seniors is an excellent fit for the RGPc Education Consultant role. Lynn has a strong background in Gerontology and has experience working as a policy and public education advisor. Lynn is looking forward to the networking opportunities across LHIN 3, 4 & 6 and will be making herself as visible as possible in the first few months of her job. Welcome aboard Lynn!

RGPC Education Calendar

May 2006

For more information, please visit the Education calendar online: www.rgpc.ca

Sun	Mon	Tue	Wed	Thu	Fri	Sat
	1	2	3 Dementia information session for family care-givers	4	5 Ont. Psychogeriatric Association Conference	6
7	8	9 Annual South Central Dementia Network meeting	10 Dementia information session for family care-givers	11	12 You & Your Student in the Placement Setting: Bridging the evidence Practice Gap	13
14	15	16	17 Dementia information session for family care-givers	18	19	20
21	22	23	24 Dementia information session for family care-givers	25	26 Service Awards for Geriatric Excellence Bouncing Back : the role of resilience in strengthening young carers, their families and their commu-	27
28	29	30	31			

Long Term Care Resource Centre
May 2006
Recommended Reading List
Compiled by Shannon Buckley

**“When you absolutely positively have to know, ask a librarian!”
American Library Association (ALA)**

Korach, C.R. et al (2006) The Serial Trial Intervention: an innovative approach to meeting needs of individuals with dementia. *Journal of Gerontological Nursing*, 32(4), 18-

King, R.B. & Semik, P.E. (2006) Stroke caregiving: difficult times, resource use, and needs during the first 2 years. *Journal of Gerontological Nursing*, 32(4), 37-

Fisher, B.S. & Regan, S.L. (2006) The extent and frequency of abuse in the lives of older women and their relationship with health outcomes. *Gerontologist*, 46(2), 200-

Castle, N.G. (2006) Measuring staff turnover in nursing homes. *Gerontologist*, 46(2), 210-

Medvene, L. et al (2006) Interpersonal complexity: a cognitive component of person-centered care. *Gerontologist*, 46(2), 220-

Mukamel, D.B. et al (2006) Team performance and risk-adjusted health outcomes in the Program of All-inclusive Care for the Elderly (PACE). *Gerontologist*, 46(2), 227-

Hutchinson, A.M. & Johnston, L. (2006) Beyond the BARRIERS scale: commonly reported barriers to research use. *Journal of Nursing Administration*, 36(4), 189-

Brazil, K. et al (2006) Quality of care for residents dying in Ontario long-term care facilities: findings from a survey of directors of care. *Journal of Palliative Care*, 22(1), 18-

Vohra, J.U. et al (2006) The last word: family members descriptions of end-of-life care in long-term care facilities. *Journal of Palliative Care*, 22(1), 33-

Skelly, J. (2006) A multifaceted intervention reduced antimicrobial prescriptions for suspected urinary tract infections in nursing home residents. *Evidence-Based Nursing*, 9(2), 59 Comment on: BMJ. 2005, 331(7518), 669 Loeb M.

Beitz, J.M. (2006) Writing the researchable question. *Journal of WOCN*, 33(2), 122-

Doughty, D. et al (2006) Issues and challenges in staging of pressure ulcers. *Journal of WOCN*, 33(2), 125-

