



At St. Peter's  
Hospital

### Special points of interest:

- Highlight: Educational Opportunity
- RGPc Update
- Education Calendar for January: No events planned for January.
- Recommended Reading List

**Please email this newsletter to all appropriate contacts & networks. If you would like to be added to our distribution list, please contact Jenifer Horvat:**

**[jhorvat@stpetes.ca](mailto:jhorvat@stpetes.ca)**

## Breaking News. . .Specialized Geriatric Services

Welcome to the RGPc Newsletter. Breaking News brings you current information related to Specialized Geriatric Services (SGS) while offering our Regions a venue for sharing news, events and initiatives with others. If you have news that you would like to share across RGPc please email [jhorvat@stpetes.ca](mailto:jhorvat@stpetes.ca)

Issue 13

January Newsletter 2006

### Upcoming Educational Opportunity!

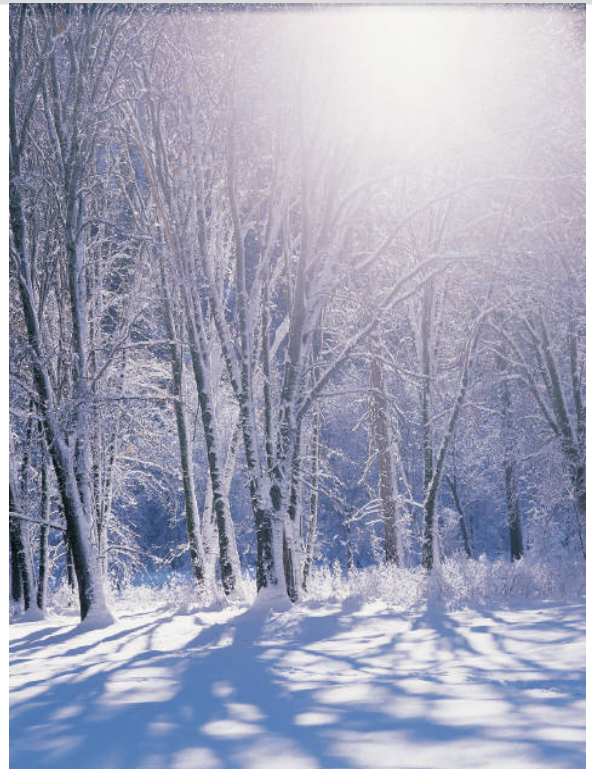
#### Elder Abuse Train-the Trainer Program to be offered in Hamilton:

The RGPc is working with the Toronto RGP Elder Abuse Network to bring trainers to Hamilton to deliver an innovative, new "Train the Trainer" format workshop to interested SGS staff.

The overall goal of the workshop is to provide a learning environment which will promote dialogue and enhance skills of health care providers regarding the early detection and management of elder abuse. It stresses two key areas: 1.) Flagging and detecting abuse and 2.) strategies and interventions for elder abuse.

The Program involves three hours of training. Participants will be provided with the Elder Abuse Manual and a CD containing print-ready handouts and forms. The total cost for this package is \$ 30.00. **At the end of the workshop participants will be able to use the material to lead their own Elder Abuse workshop in their facilities.**

The workshop will be hosted at St. Peter's Hospital in February. Twenty participants can be trained at one time and will be taken on a first-come-first served basis. If there is



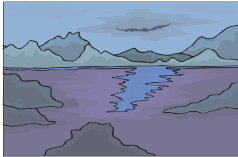
enough interest, a second workshop may be offered.

**If you are interested in signing up for the workshop, please contact Jenifer Horvat ASAP to reserve your spot:**

**905-777-3837 x 12434  
[jhorvat@stpetes.ca](mailto:jhorvat@stpetes.ca)**

## RGPC Update

### Service Awards for Geriatric Excellence—Update



**It is not too late to submit a nomination!!!**

**The deadline for nominations for the Service Awards has been extended into January!** Please take a moment to recognize the outstanding contributions and achievements of your colleagues and fill out a nomination form. The forms can be found on the RGPC website: [www.rgpc.ca](http://www.rgpc.ca) and will also accompany this newsletter for your convenience.

The Awards dinner and celebration will be hosted this year in Guelph on May 26, 2006.

### UBC Interdisciplinary Elder Care Curriculum - Update on RGPC Pilot Project

Congratulations to all five sites that have successfully completed the 11-module course! All teams that participated were interdisciplinary and included the Wellington-Dufferin Expert Geriatric Services, Shaver Rehabilitation, Macassa Long-Term Care Facility, Mental health Teams representing Brant, Niagara, Halton and Hamilton and the St. Joseph's Inpatient mental Health Unit, A 1. The data for the evaluation of this pilot study will be in over the next 3 months.

One early piece of feedback was that we need to develop case based scenarios applicable to long term care. RGPC will discuss this with the curriculum developers at UBC. There has been a great deal of expressed interest in this curriculum. The RGPC will be in discussions with UBC about the future role that the RGPs of Ontario can play to further implement and disseminate the curriculum.

## News from the Continuing Gerontological Education Cooperative (CGEC)

**C G**

Beginning in January 2006, Lori Schindel-Martin R.N, Ph.D, Director of the Ruth Sherman Centre for Research and Education, Shalom Village will take over from Maureen Montemuro as Co-chair of the CGEC. Many thanks to Maureen for her hard work and dedication in the role of Co-Chair over the past two years. Lori will work closely with current co-chair, Barbara McCoy.

**E C**

Welcome to the following new members to the CGEC:

- Alexander Place, Waterdown
- Grace Villa, Hamilton
- Red Cross Community Health Services, Burlington
- Park Lane Terrace, Paris
- The Willowgrove, Ancaster

If you are interested in joining the CGEC, please contact Jenifer Horvat: 905-777-3837 x 12434 or [jhorvat@stpetes.ca](mailto:jhorvat@stpetes.ca)

Long Term Care Resource Centre  
January 2006  
**Recommended Reading List**  
*Compiled by Shannon Buckley*

***“When you absolutely positively have to know, ask a librarian!”***  
**American Library Association (ALA)**

Goodridge, D. et al. (2005) Health-related quality of life in diabetic patients with foot ulcers: literature review. *Journal of Wound, Ostomy and Continence Nursing*, 32(6), 368-

Colwell, J.C. & Fichera, A. (2005) Care of the obese patient with an ostomy. *Journal of Wound, Ostomy and Continence Nursing*, 32(6), 378-

Lewis, D.L. et al. (2005) Translating evidence into practice: the case of dementia guidelines in specialized geriatric services. *Canadian Journal on Aging*, 24(3), 251-

Crilly, R.G. (2005) Patient outcomes after discharge from a geriatric day hospital. *Canadian Journal on Aging*, 24(3), 305-

Deyle, G.D. et al. (2005) Physical therapy treatment effectiveness for Osteoarthritis of the knee. *Physical Therapy*, 85(12), 1301-

Rowan, A.J. (2005) Epilepsy in older adults. *Geriatrics*, 60(12), 30-

Duffy, M.E. (2005) Resources for critically appraising qualitative research evidence for nursing practice clinical question. *Clinical Nurse Specialist*, 19(6), 288-

Ervin, N.E. (2005) Clinical coaching: a strategy for enhancing evidence-based nursing practice. *Clinical Nurse Specialist*, 19(6), 296-

Kort, R. et al. (2005) Planning for a flu pandemic in Ontario. *Long Term Care*, 15(4), 15-

Aminzadeh, F. et al. (2005) Effectiveness of outpatient geriatric assessment programs. *Journal of Gerontological Nursing*, 31(12), 19-

Hicks-Moore, S.L. (2005) Relaxing music at mealtime in nursing homes: effects on agitated patients with dementia. *Journal of Gerontological Nursing*, 31(12), 26-

Linton, A. (2005) The Benefits of cholinesterase inhibitors. *Journal of Gerontological Nursing*, 31(12), 4-

Kalisch, B.J. & Begeny, S.M. (2005) Improving nursing unit teamwork. *Journal of Nursing Administration*, 35(12), 550-

Longest Jr., B.B. (2005) Logic models as aides in managing health programs. *Journal of Nursing Administration*, 35(12), 557-

Pauli, P. (2005) Using games to demonstrate competency. *Journal for Nurses in Staff Development*, 21(6), 272-

